

Gavin

Gavin

Gavin

1



Gavin

Gavin

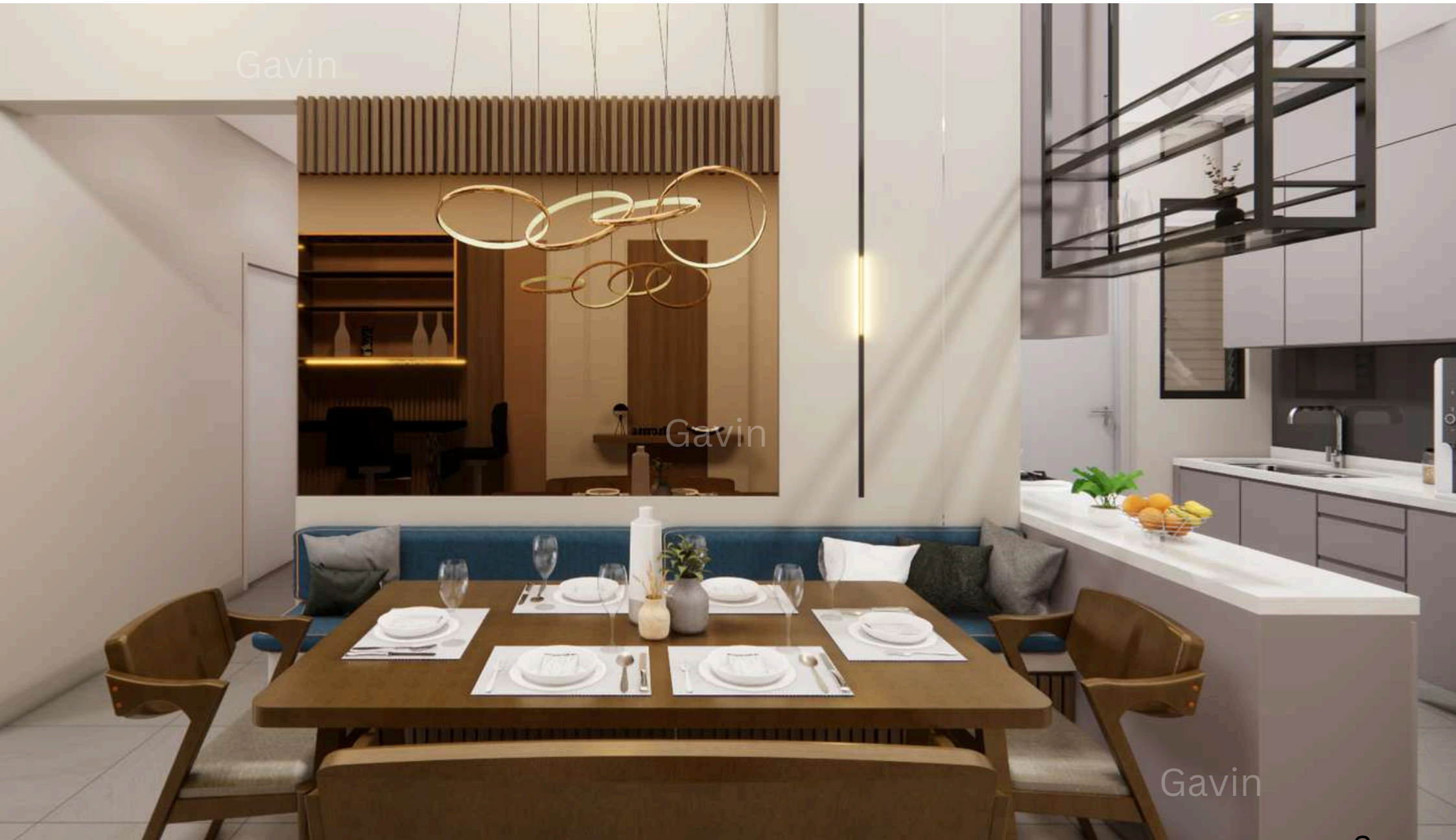
Gavin



Gavin

Gavin

Gavin

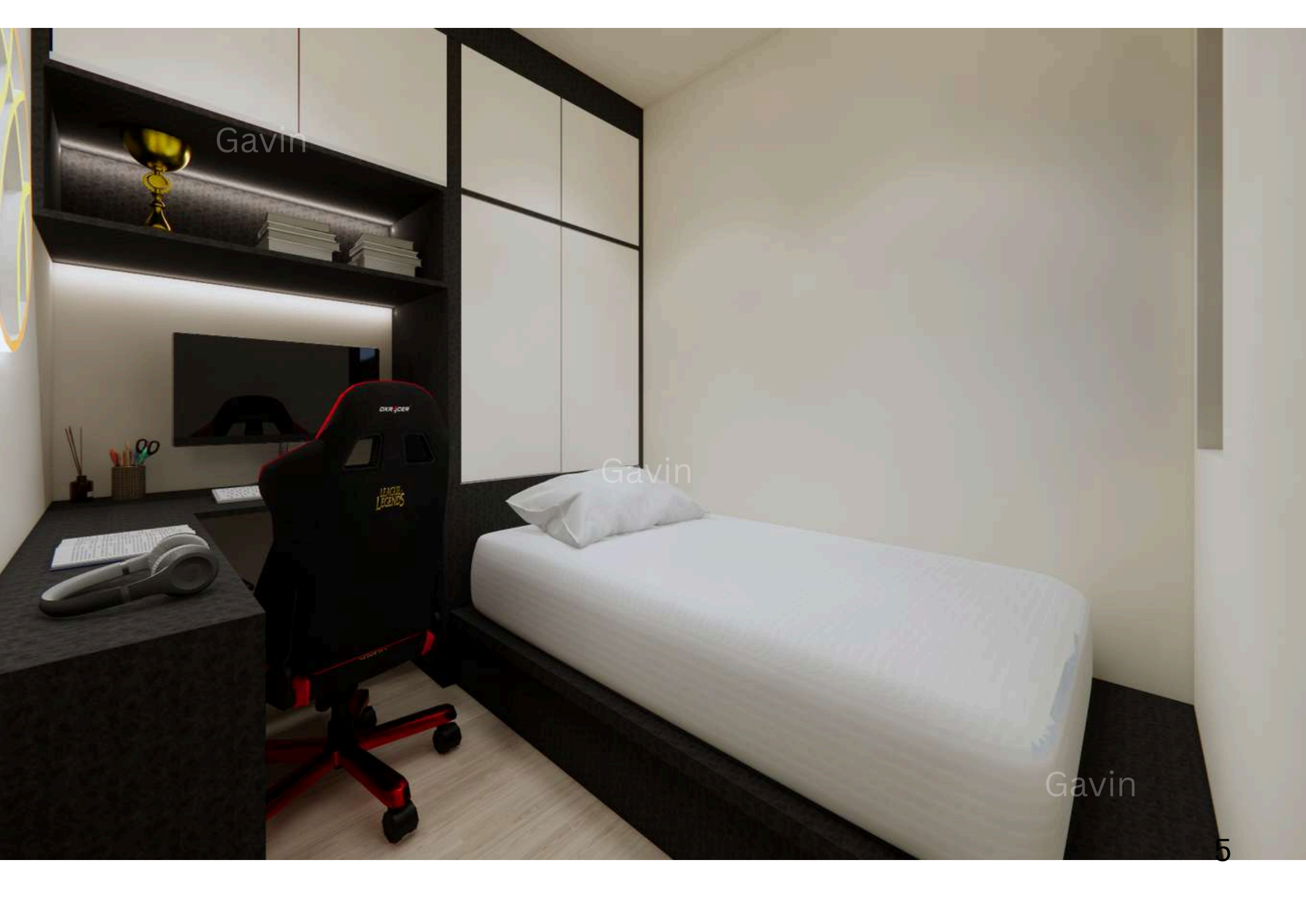


Gavin



Ga

Gavin



Gavin

Gavin

Gavin



Gavin

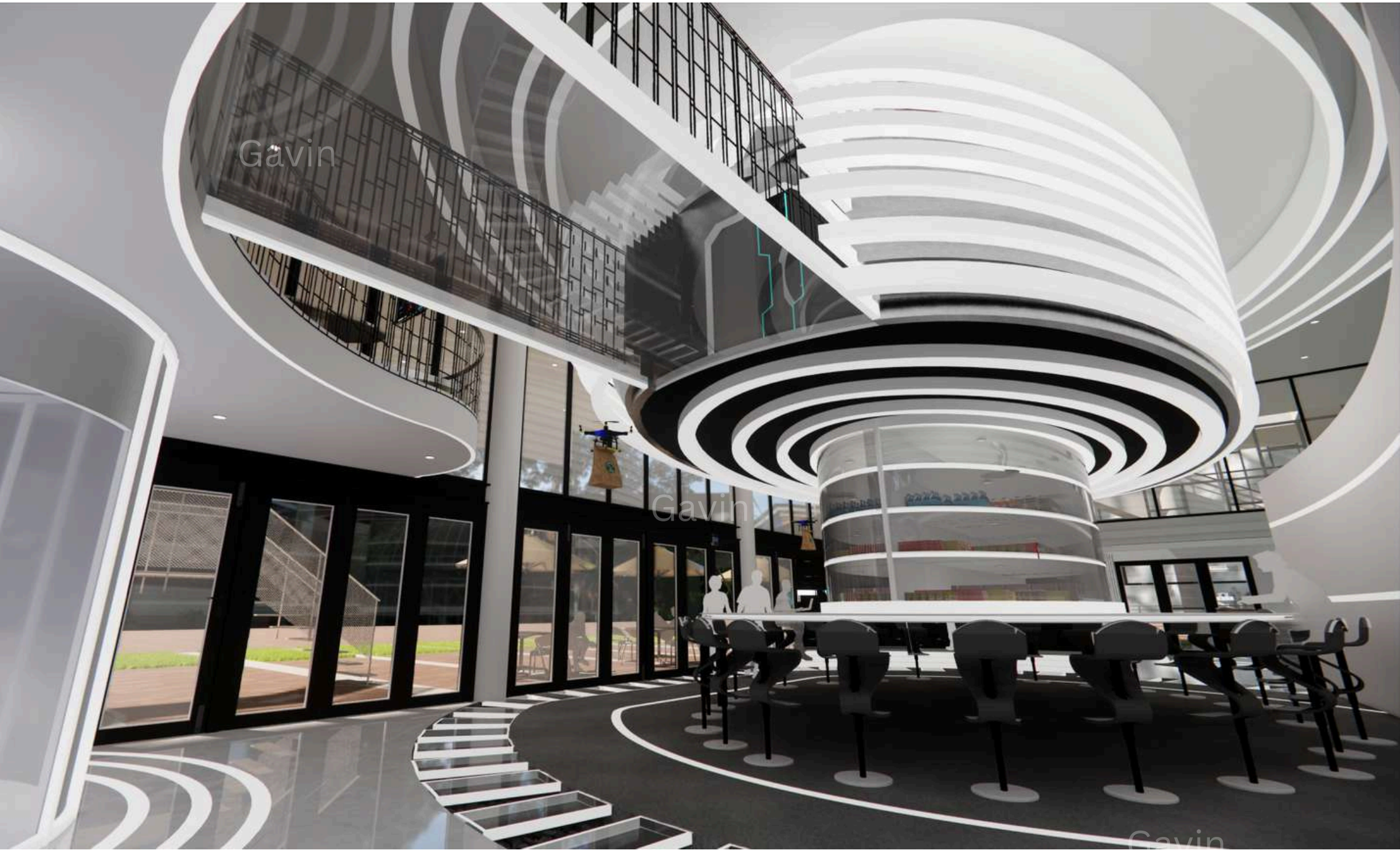
Gavin

Gavin

Gavin

Gavin





SITE CONTEXT

TAMARIND SQUARE
TAMARIND SQUARE IS THE URBAN COLLAGE WHERE LIFE IN ALL ITS FACETS COMES TOGETHER. URBAN ART AND CULTURE MEET THE MARKET PLACE AND COMMERCIAL ACTIVITIES COEXIST WITH COMMUNITY GROUPS, NEIGHBOURHOODS AND JOY NOISE. TAMARIND SQUARE IS BUILT WITH A HEART BEAT TO ATTRACT TRAVELLERS FROM THE AREA AND BEYOND. URBAN STUDENT COMMUNITIES AND LOCAL BUSINESS ARE RESPONSIBLE TO THE TOWNERS AROUND THE 10-15 MINUTE WALK TO THE STATION AND THE 15-20 MINUTE WALK TO THE UNIVERSITY.

HEXAGON ESCAPE

HEXAGON ESCAPE IS A PLACE FOR STUDENT TO LEARN OVERCOURTURY SKILL. THE NAME HEXAGON ESCAPE IS INSPIRED BY FLEXIBILITY AND ACCOMMODATION. THE SHAPE SUGGESTS MODERNITY AND PIONEERING. ESSENTIAL QUALITIES FOR A SPACE DEDICATED TO TECHNOLOGY AND OVERCOURTURY AND EMPHASIS IS A FUNDAMENTAL ASPECT OF OVERCOURTURY. REPRESENTING THE PROTECTION AND CONFIDENTIALITY OF DATA. IT INVOLVES TRANSPARENT INFORMATION INTO A SECURE FORMAT THAT CAN ONLY BE ACCESSED BY AUTHORIZED PARTIES.

OPERATING HOURS
MONDAY TO FRIDAY 9AM - 6PM
SATURDAY TO SUNDAY 10AM - 6PM

OPEN

INTRODUCTION MATERIAL BOARD

AXONOMETRIC

Gavin

- ### MEZZANINE FLOOR
- 1 MEETING ROOM A SPACE DESIGN FOR PRIVATE DISCUSSION
 - 2 RECREATION AREA PLAY SOME GAME AND WATCH SOME VIDEO THAT RELATED TO OVERCOURTURY
 - 3 ENJOY SPACE THE SPACES THAT AGAINST THE INSIDE
- ### GROUND FLOOR
- 1 RECEPTION PROVIDE INFORMATION AND MEMBERSHIP REGISTRATION
 - 2 LOUNGE A PLACE TO REST
 - 3 MINI LIBRARY CAN FIND ALL BOOK THAT RELATED WITH OVERCOURTURY
 - 4 SHARING STAGE BRING A LEARNING PLATFORM FOR EMPHR AND STUDENT
 - 5 MULTIPURPOSE AREA PROVIDE FREE FOOD AND A SPACE TO DRINK AND WORK
 - 6 STUDYPOOD A SERVICE AREA TO STUDY
 - 7 IDENTIFY SPACE PROVIDE ID AND PAPER PRINTING SERVICE
 - 8 TOILET 2 CUBICLE UNisex TOILET PROVIDED
- ### TARGET CUSTOMER
- 1 UNIVERSITY STUDENTS WITH A PARTICULAR FOCUS ON THEIR STUDYING COMPUTER SCIENCE, IT, AND RELATED FIELD
 - 2 FACULTY MEMBERS AND VISITING PROFESSIONALS IN THE FIELD OF OVERCOURTURY
 - 3 TOWNS, CLUBS AND ORGANIZATION FOCUSING ON TECHNOLOGY AND SECURITY

FURNITURE LAYOUT PLAN (GF)
SCALE 1:100

FURNITURE LAYOUT PLAN (MF)
SCALE 1:100



BESPOKE DETAILING

THE DESIGN IS A 2 IN 1 SPACE, WHICH COMBINE ENJOY SPACE AND HAS TERROUR SPACE. THERE ARE TOTAL 3x2 LEVEL. MAIN ENJOY SPACE IS AT GROUND FLOOR AND ENJOY SPACE IS AT FIRST FLOOR. MULTIPURPOSE SPACE IS DESIGNED FOR DRINK AND WORKING, AND THERE ALSO HAVE A SMALL PARTY FRONT OF THE TABLE. IF NECESSARY, THE SPACE ALSO CAN BE USED FOR ALUMNUS SEATS.

ACTIVITIES

- EVENT SHARING SESSION
- WORKSHOP
- SOLO CONVERSATION

SPACE REQUIREMENTS

- 1. THE MEETING ROOM SHOULD BE A PRIVATE SPACE WITH A FOCUS ON PRODUCTIVITY AND COLLABORATION.
- 2. THE RECREATION AREA SHOULD BE A SPACE WHERE STUDENTS CAN RELAX AND ENJOY THEMSELVES.
- 3. THE LOUNGE SHOULD BE A SPACE WHERE STUDENTS CAN MEET AND CONVERSE WITH FRIENDS AND COLLEAGUES.
- 4. THE MINI LIBRARY SHOULD BE A SPACE WHERE STUDENTS CAN FIND ALL BOOKS RELATED TO OVERCOURTURY.
- 5. THE SHARING STAGE SHOULD BE A SPACE WHERE STUDENTS CAN PRESENT AND SHARE THEIR IDEAS.
- 6. THE MULTIPURPOSE AREA SHOULD BE A SPACE WHERE STUDENTS CAN DRINK AND WORK.
- 7. THE STUDYPOOD SHOULD BE A SPACE WHERE STUDENTS CAN STUDY AND WORK.
- 8. THE IDENTIFY SPACE SHOULD BE A SPACE WHERE STUDENTS CAN PRINT AND COPY.
- 9. THE TOILET SHOULD BE A SPACE WHERE STUDENTS CAN USE THE TOILET.





THE HIDDEN ROUTE MUSEUM

WAR

KUALA LUMPUR WAS OCCUPIED BY JAPAN. IT HAS ALSO EXPERIENCED MANY WARS IN HIS TOWN. IN FOREIGN COUNTRIES, UNDERGROUND BUNKER ARE A GOOD REFUGE. SAAG AND A GOOD BASE FOR PREPARING FOR WAR. HOWEVER, THERE ARE VERY FEW WAR TUNNELS FOUND IN KUALA LUMPUR TODAY. WHERE ARE THE TUNNELS AND WHAT THEY USE THE TUNNELS FOR?



THIS MUSEUM WILL BRING OUT A LOT OF FORGOTTEN OR NEGLECTED INFORMATION AND WE WILL MAINLY FOCUS ON THE JAPANESE OCCUPATION PERIOD AND THE MALAYAN EMERGENCY. THIS MUSEUM COMBINES MODERN AND HISTORIC DESIGN, HOPING TO BRING CUSTOMERS A FEAST OF KNOWLEDGE AND VISION.

MALAYIA'S HISTORY HAS BEEN SHAPED BY WAR AND WARRENCE. JAPAN'S WWII OCCUPATION (1941-1945) BROUGHT AN END TO THE BRITISH COLONIAL RULE. THE MALAYAN EMERGENCY (1948-1960) WAS A WAR AGAINST COMMUNIST INSURGENTS UNDER BRITISH RULE. THE 1968-1969 MALAYAN EMERGENCY (1968-1969) OCCURRED DURING THE MALAYSIAN MALAYSIAN. TODAY, THE WAR IS KNOWN AS MALAYSIAN EMERGENCY. IT IS A CRISIS OF IDENTITY AND SOCIAL ORDER.

2025 MUSEUM OPENING

1989 ENDED EMERGENCY 2

1968 MALAYAN EMERGENCY 2

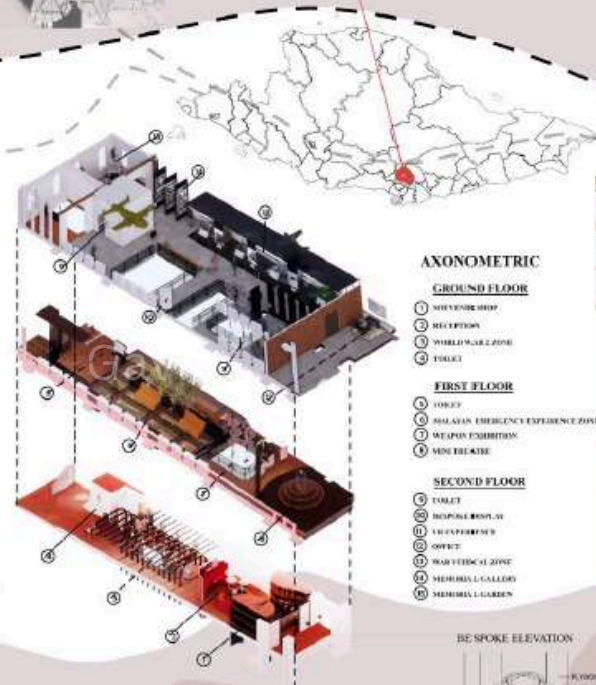
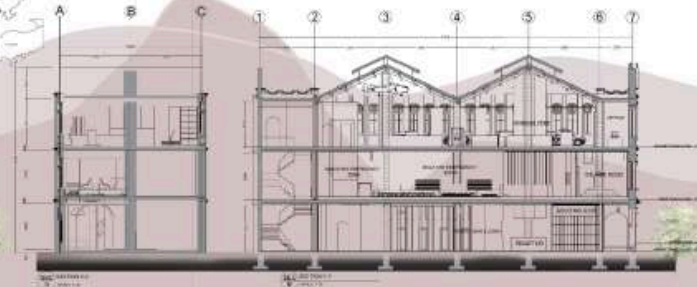
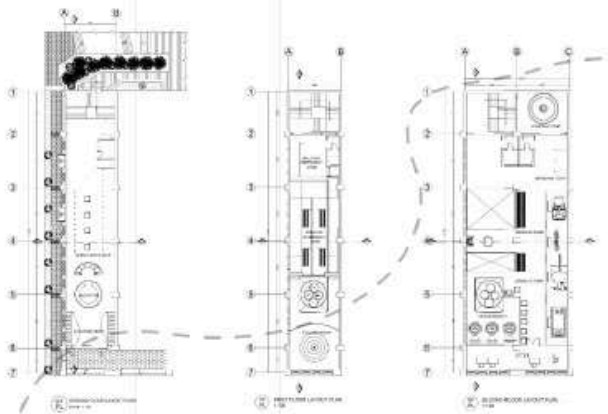
1960 ENDED EMERGENCY 1

1948 MALAYAN EMERGENCY 1

1945 JAPAN SURRENDER

1942 WWII - SINGAPORE

1941 WWII - MALAYSIA



AXONOMETRIC

GROUND FLOOR

- 1 RECEPTION AREA
- 2 RECEPTION
- 3 WHEELCHAIR ZONE
- 4 TOILET

FIRST FLOOR

- 5 TOILET
- 6 MALAYAN EMERGENCY EXPERIENCE ZONE
- 7 WEAPON EXHIBITION
- 8 MINI THEATRE

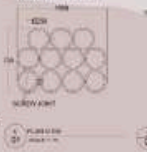
SECOND FLOOR

- 9 TOILET
- 10 DISPLAY ROOM 1
- 11 DISPLAY ROOM 2
- 12 OFFICE
- 13 WAR THEATRE ZONE
- 14 MEMORIAL GALLERY
- 15 MEMORIAL GALLERY

BESPOKE

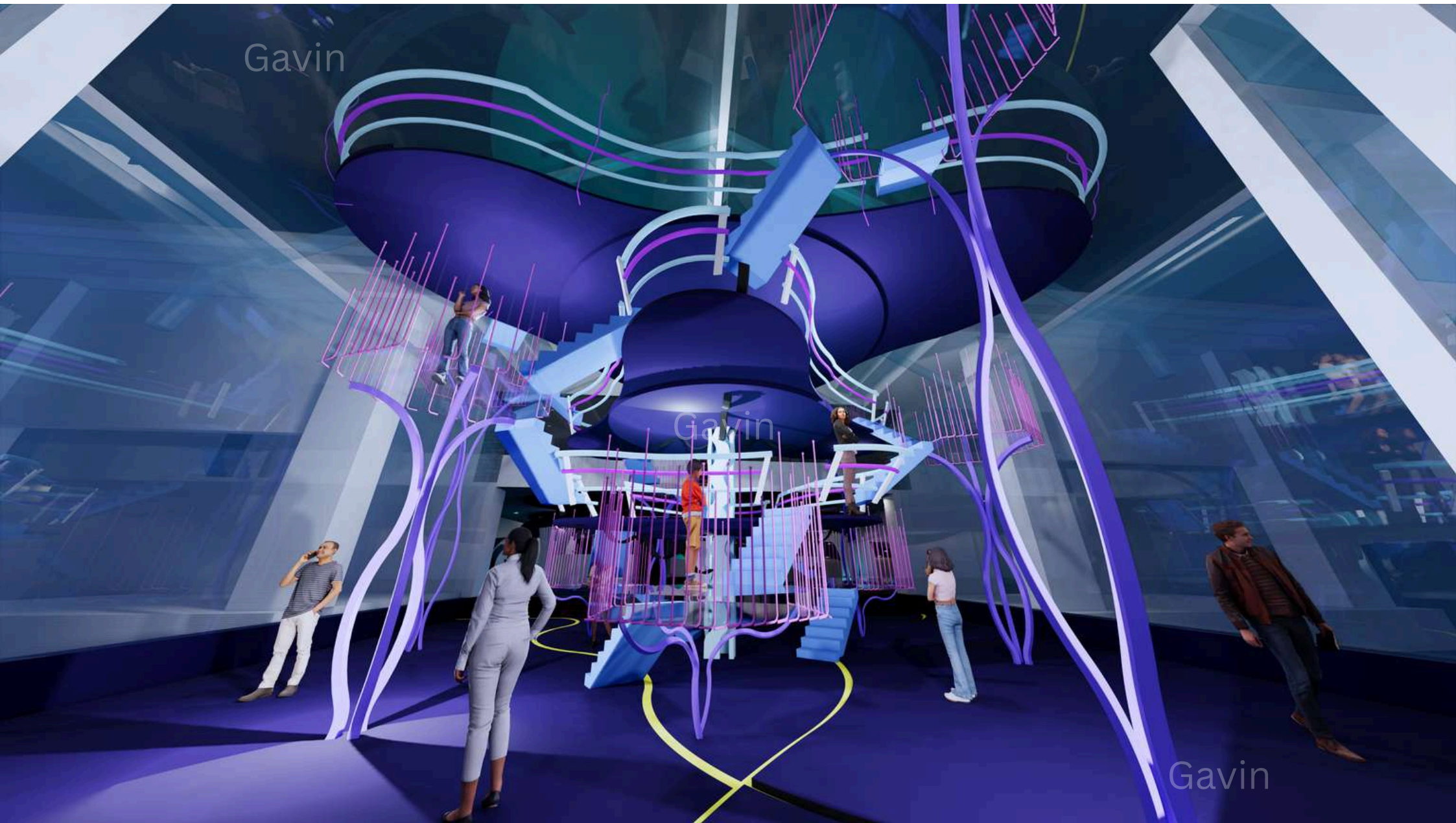
This facade design is based on the War Tunnel, a symbolic symbol of war in Malaya. The circular shape represents the tunnel, with each circle representing a tunnel and the central square representing the entrance. The design also incorporates a circular pattern, representing a tunnel that connects the past and the present, creating an atmosphere of mystery and intrigue.

BESPOKE PLAN



BE SPOKE ELEVATION



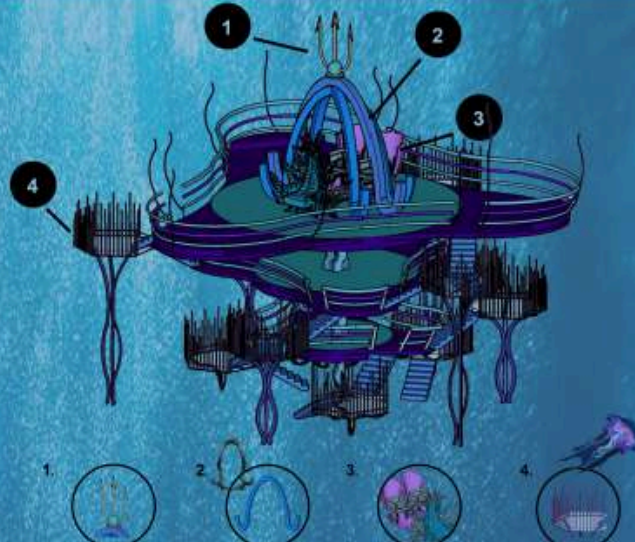
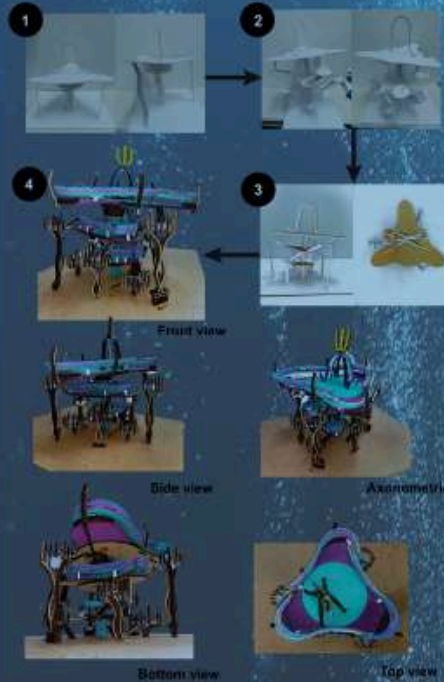


Poseidheron" is the place that signify sovereign power of Poseidon. "Poseidheron" has 4 floors in total. Ground floor is the entrance to access the first floor. First floor is ammunition space which can let Poseidon and his soldier training here. After that, second floor is dining area for the soldiers to rest after training. Poseidon will having his meal at the top floor which is third floor. On the third floor is the shower of Poseidon. He usually rests here with his wife and holds meetings with his soldiers. The main colour of the design is purple and blue because my topic is related with water/sea so I think blue and purple is the most suitable colour for water.

Design Development



Evolution process

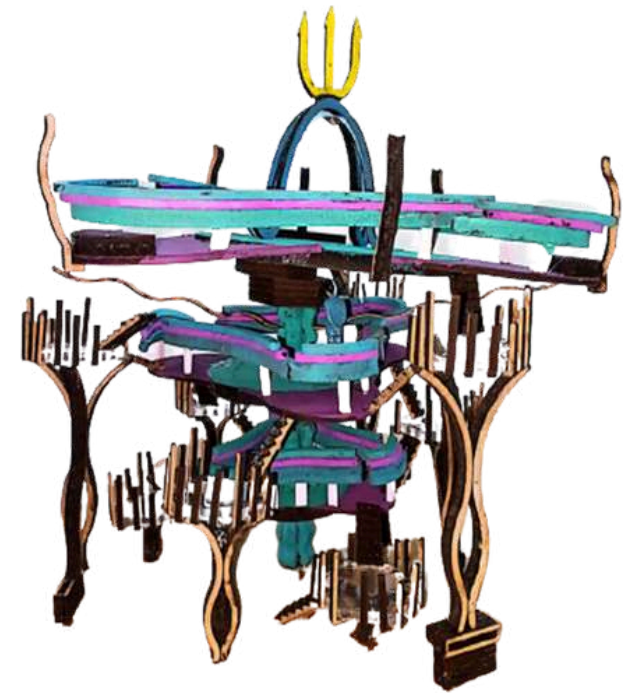
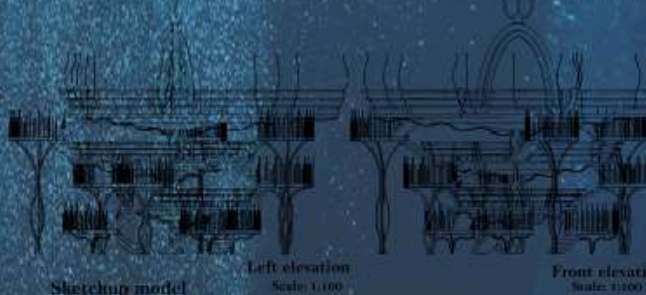


1. The decoration on the rooftop is inspired by Poseidon's weapon which is the trident.
 2. The colour was inspired by sea creature's shell tones. This is because Poseidon like to create structure which he will enjoy.
 3. The seats behind was inspired by sea creature's body especially for wife. The seats without is available for Poseidon.
 4. The landing floor was inspired by jellyfish's tail so the fence have a different height of line.

Material



Overall floorplan Scale: 1:100





KUALA LUMPUR WAS OCCUPIED BY JAPAN. IT HAS ALSO EXPERIENCED MANY WARS IN HISTORY. IN FOREIGN COUNTRIES, UNDERGROUND BUNKER, ARE A GOOD REFUGE BASE AND A GOOD BASE FOR PREPARING FOR WAR. HOWEVER, THERE ARE VERY FEW WAR TUNNEL FOUND IN KUALA LUMPUR. TODAY, WHERE ARE THE TUNNEL? AND WHAT THEY USE THE TUNNEL FOR?

